

Neil M. Sullivan

TRANSACTIONS

of the

Gulf Coast Association of Geological Societies

14th Annual Convention



*Lafayette Geological Society
New Orleans Geological Society
Shreveport Geological Society
Mississippi Geological Society
Southeastern Geological Society*

*Beaumont Geological Society
Corpus Christi Geological Society
East Texas Geological Society
Houston Geological Society
South Texas Geological Society*

Corpus Christi, Texas

October 28-30, 1964

TRANSACTIONS
Gulf Coast Association Of Geological Societies

VOLUME XIV, 1964

Mary Louise Rhodes, Editor

prepared for the

FOURTEENTH ANNUAL CONVENTION OF G.C.A.G.S.

and the

**1964 FALL REGIONAL MEETING OF THE
AMERICAN ASSOCIATION OF PETROLEUM GEOLOGISTS**

held in co-operation with

The Gulf Coast Section of the

Society of Economic Paleontologists and Mineralogists

OCTOBER 28-30, 1964

CORPUS CHRISTI, TEXAS

○

Published at

Corpus Christi, Texas

Copyright 1964 by the Gulf Coast Association of Geological Societies
No reproduction without permission of the President of the G.C.A.G.S.

TABLE OF CONTENTS

	Page
OFFICERS AND EXECUTIVE COMMITTEE, G.C.A.G.S.	V
OFFICERS OF MEMBER SOCIETIES, G.C.A.G.S.	V
REPORT OF THE PRESIDENT, G.C.A.G.S., Earl B. Knott	VII
REPORT OF THE GENERAL CHAIRMAN 14th ANNUAL CONVENTION, Byron F. Dyer	VIII
FOURTEENTH ANNUAL CONVENTION COMMITTEES	IX
REPORT OF THE PROGRAM CHAIRMAN, Douglas E. Masten	X
REPORT OF THE EDITOR, Mary Louise Rhodes	X
OFFICERS AND BUSINESS REPRESENTATIVES, GULF COAST SECTION SEPM	XI
REPORT OF THE PRESIDENT, GCS SEPM, Lyman D. Toulmin	XII
BEST PAPER AWARDS 13th ANNUAL MEETING	XIII

TECHNICAL PAPERS AND ABSTRACTS

SOME FACIES OF REGIONAL HISTORY (Abstract), Edgar W. Owen	1
WHERE ARE PETROLEUM EXPLORATIONISTS HEADING?, Morgan J. Davis	3
THE REMAINING FRONTIERS FOR EXPLORATION IN NORTHEAST TEXAS, Paul H. Nichols	7
FRIO FORMATION OF SOUTHERN TEXAS, C. W. Holcomb	23
LET'S USE MORE OF THE ELECTROMAGNETIC SPECTRUM, Allen M. Feder	35
AN HISTORICAL SKETCH OF PETROLEUM GEOLOGY IN THE GULF COAST, Edgar W. Owen	51
CYCLIC SEDIMENTATION IN THE MISSISSIPPI RIVER DELTAIC PLAIN	67
James M. Coleman, Sherwood M. Gagliano	
REGIONAL STRATIGRAPHY OF THE GULF COAST MIOCENE, E. H. Rainwater	81
GEOLOGIST, HELP YOUR GEOPHYSICIST (Abstract), Edward F. Haye	125
THE COMPUTER IN PETROLEUM EXPLORATION (Abstract), Philip Gans	127
STATIGRAPHIC CORRELATION IN THE GULF COAST (Abstract), Hubert C. Skinner	129
EXPLORATION FOR PETROLEUM IN CARBONATE ROCKS (Abstract), M. Malek-Aslani	131
AN INTRODUCTION TO CONTINUOUS ELECTRIC LOGGING WHILE DRILLING, Jan L. Arps	133
SMACKOVER FIELDS—HARD TO FIND OR JUST EASY TO MISS?, Richard A. Berryhill	137
COTTON VALLEY GROUP (JURASSIC) NOMENCLATURE, LOUISIANA AND ARKANSAS	143
C. John Mann, William A. Thomas	
THE WEST WHITE LAKE FIELD, VERMILION PARISH, LOUISIANA, AND ITS RELATION	153
TO THE ALIGNMENTS OF OIL AND GAS FIELDS IN LOUISIANA, R. O. Steinhoff	
BASEMENT FAULTS AND SMACKOVER STRUCTURE, Phillip T. Fowler	179
MIOCENE LITHOFACIES IN SOUTHEASTERN LOUISIANA, Carl E. Thorsen	193

LOWER WILCOX TREND DeWITT COUNTY, TEXAS, Franklin C. Jones	203
THE STRATIGRAPHIC RELATIONSHIP OF THE HACKBERRY, ABBEVILLE AND HARANG FAUNAL ASSEMBLAGES, Charles W. Stuckey, Jr.	209
TRANSGRESSIONS AND REGRESSIONS IN THE GULF COAST TERTIARY, E. H. Rainwater	217
JURASSIC DATA FROM WELLS IN NORTHEAST MEXICO, Raul Perez F., Teodoro Diaz G.	231
(Abstract with map)	
JURASSIC DEVELOPMENT, UPPER GULF COASTAL AREAS OF NORTHEAST MEXICO AND SOUTHERN UNITED STATES (Abstract), R. W. Eaton	233
CURRENT COMPUTER USAGE BY EXPLORATION GEOLOGISTS (Abstract)	235
James M. Forgotson, Jr., Charles F. Iglehart, John L. Rivette	
ENVIRONMENTAL COMPLEXES, SOUTH TEXAS COAST, Miles O. Hayes, Alan J. Scott	237
(Abstract)	
DYNAMIC PHENOMENA OF SEDIMENT COMPACTION IN MATAGORDA COUNTY, TEXAS	241
Robert L. Myers, DeWitt C. Van Siclen	
REGIONAL VARIATIONS OF HYDROCARBONS IN THE EDWARDS LIMESTONE	253
(CRETACEOUS) OF SOUTH TEXAS, Duane E. Moredock, DeWitt C. Van Siclen	
BASEMENT ROCKS OF THE TEXAS GULF COASTAL PLAIN, Peter T. Flawn	271
A STRATIGRAPHIC REVISION WITHIN THE JACKSON GROUP IN SOUTH TEXAS	277
Jerry D. Horne	
REVISION OF COMANCHE CRETACEOUS STRATIGRAPHIC NOMENCLATURE,	285
SOUTHERN EDWARDS PLATEAU, SOUTHWEST TEXAS, F. E. Lozo, C. I. Smith	
FRIO BARRIER BAR SYSTEM OF SOUTH TEXAS, Don R. Boyd, Byron F. Dyer	309
INDEX TO ADVERTISERS	LAST PAGE

GULF COAST ASSOCIATION OF GEOLOGICAL SOCIETIES

PRESIDENT	Earl Knott, Tenneco Oil Company Corpus Christi Geological Society
PAST PRESIDENT	J. C. Byrd, Jones-O'Brien Shreveport Geological Society
VICE PRESIDENT	Raymond E. Fairchild, Trunkline Gas Company Houston Geological Society
SECRETARY	Robert W. Luker, Independent Corpus Christi Geological Society
TREASURER	Daniel A. Pedrotti, Texaco Inc. Corpus Christi Geological Society

EXECUTIVE COMMITTEE

BEAUMONT GEOLOGICAL SOCIETY	GEORGE A. McCALPIN	Sun Oil Co.
CORPUS CHRISTI GEOLOGICAL SOCIETY	C. E. BUCK	Humble Oil and Refining Co.
EAST TEXAS GEOLOGICAL SOCIETY	RICHARD FORGEY	McAlester Fuel Co.
HOUSTON GEOLOGICAL SOCIETY	R. J. (JACK) CHAMBERS	Phillips Petroleum Co.
LAFAYETTE GEOLOGICAL SOCIETY	KARL H. ARLETH	Occidental Petroleum Co.
MISSISSIPPI GEOLOGICAL SOCIETY	JAMES F. BOLLMAN	Larco Drilling Corp.
NEW ORLEANS GEOLOGICAL SOCIETY	LEONARD L. LIMES	El Tres Petroleum Corp.
SHREVEPORT GEOLOGICAL SOCIETY	GEORGE B. HICKOK	Humble Oil and Refining Co.
SOUTHEASTERN GEOLOGICAL SOCIETY	WILLIAM D. REVES	Florida Geological Survey
SOUTH TEXAS GEOLOGICAL SOCIETY	ALLAN C. TUCKER	Blanco Oil Co.

OFFICERS OF MEMBER SOCIETIES

GULF COAST ASSOCIATION OF GEOLOGICAL SOCIETIES

BEAUMONT GEOLOGICAL SOCIETY, P. O. BOX 5467, Beaumont, Texas

PRESIDENT	Donald C. Keen, Sun Oil Company
VICE-PRESIDENT	John Bruns, Humble Oil and Refining Company
SECRETARY	Paul Enloe, Sun Oil Company
TREASURER	Ken Conrad, Schlumberger Well Surveying Corp.

CORPUS CHRISTI GEOLOGICAL SOCIETY, P. O. BOX 1068, Corpus Christi, Texas

PRESIDENT	C. E. Buck, Humble Oil and Refining Company
1st VICE-PRESIDENT	Byron F. Dyer, Texas Eastern Transmission Corp.
2nd VICE-PRESIDENT	D. B. Clutterbuck, Shell Oil Company
SECRETARY	J. H. Miller, Forest Oil Corporation
TREASURER	J. H. Stanton, Southern Minerals Corporation

EAST TEXAS GEOLOGICAL SOCIETY, P. O. BOX 216, Tyler, Texas

PRESIDENT	A. H. Nixon, Union Producing Company
VICE-PRESIDENT	Harry L. Gearhart, Lone Star Producing Company
SECRETARY	A. B. Bacho, Jr., Gulf Oil Corporation
TREASURER	Richard H. Forgey, McAlester Fuel Company

HOUSTON GEOLOGICAL SOCIETY, 234 Esperson Building, Houston, Texas

PRESIDENT	Hillord Hinson, Consultant
1st VICE-PRESIDENT	Frank R. Hardin, Hardin and Hardin
2nd VICE-PRESIDENT	Charles D. McMurrey, % Claude B. Hamill
SECRETARY	Martha Lou Shirley, Shell Canadian Exploration Co.
TREASURER	Jesse L. George, Jr., % P. R. Rutherford

LAFAYETTE GEOLOGICAL SOCIETY, P. O. BOX 1896, O.C.S., Lafayette, Louisiana

PRESIDENT	Allen M. Borland, Sun Oil Company
VICE-PRESIDENT	William R. Paine, University of Southwestern Louisiana
SECRETARY	Leonard C. Searles, Phillips Petroleum Company
TREASURER	Robert A. Anderson, Shell Oil Company

MISSISSIPPI GEOLOGICAL SOCIETY, P. O. BOX 422, Jackson, Mississippi

PRESIDENT	James F. Bollman, Larco Drilling Corp.
VICE-PRESIDENT	E. R. Hines, Jr., Mississippi-Texas Oil Producers
SECRETARY	R. C. Ohnoutka, Pan American Petroleum Corp.
TREASURER	S. L. Blanton, Sun Oil Company

NEW ORLEANS GEOLOGICAL SOCIETY, P. O. BOX 52172, New Orleans, Louisiana

PRESIDENT	Donald I. Andrews, An-Son Petroleum Corp.
VICE-PRESIDENT	Jack C. Stipe, Kerr-McGee Oil Industries, Inc.
SECRETARY	Dwight L. McCray, Analab, Inc.
TREASURER	A. T. Green, Jr., Union Oil Company of California

SHREVEPORT GEOLOGICAL SOCIETY, P. O. BOX 750, Shreveport, Louisiana

PRESIDENT	Jimmie C. Smith, Phillips Petroleum Company
1st VICE-PRESIDENT	Prentis Boatner, Jr., Humble Oil and Refining Co.
2nd VICE-PRESIDENT	Gene C. Sigler, Sunray DX Oil Company
SECRETARY	Tommy H. Atkins, Tenneco Oil Company
TREASURER	James Gregg Lea, Franks Petroleum

SOUTHEASTERN GEOLOGICAL SOCIETY, P. O. BOX 1634, Tallahassee, Florida

PRESIDENT	William D. Reves, Florida Geological Survey
VICE-PRESIDENT	E. C. Pirkle, University of Florida
SECRETARY-TREASURER	Steve R. Windham, Florida Geological Survey

SOUTH TEXAS GEOLOGICAL SOCIETY, 939 Milam Building, San Antonio, Texas

PRESIDENT	A. Wayne Wood, Blanco Oil Company
VICE-PRESIDENT	Wilford L. Stapp, % H. H. Phillips
SECRETARY	John L. Douglas, Independent
TREASURER	Franklin C. Jones, Lone Star Producing Company

GULF COAST ASSOCIATION OF GEOLOGICAL SOCIETIES

REPORT OF THE PRESIDENT

1964

The Fourteenth Annual Convention of the GCAGS is convening in Corpus Christi, Texas and is expected to equal or surpass the excellence of previous technical meetings of the Geological Profession of the Gulf Coast Region. The carefully chosen theme for this convention is, "TRENDS OLD AND NEW", which I believe is very timely in view of the increased interest in the ultra deep prospecting for Miocene, Frio, Wilcox, and Smackover as well as rejuvenation of well established trends where shallow, subtle structures and stratigraphic traps of economic significance are being found.

The GCAGS remains in excellent financial condition with our total assets being \$30,015.00 as of March 31, 1964. A study is being made and recommendations will be forthcoming as to the best means to support projects, grants, and/or scholarships to further our Geological Profession. We are now assisting some individual geologists and study groups in the preparation of slides and drafting for papers to be presented at our annual meetings.

Personal recognition and thanks for a job well done should go to all of our members who have served this year to make the Fourteenth Annual Meeting the best yet. It has been pleasurable for me to be associated with such able and dedicated people.

EARL B. KNOTT

REPORT OF THE GENERAL CHAIRMAN

FOURTEENTH ANNUAL MEETING

Each year the responsibility of organizing the annual meeting of this society is given to the General Chairman. In the early days of planning, the job in its entirety seemed insurmountable. Every year staging of the annual convention is hectic and demanding of those committee chairmen and workers assisting in planning programs and activities. This General Chairman has been most fortunate in having available a hard core of excellent workers without whose help very little could have been accomplished; consequently, the success of this convention is directly related to their fine efforts.

The theme "Trends — Old and New" was selected for the purpose of developing a more comprehensive knowledge of Gulf Coast geology. This purpose has been accomplished as witnessed by the accompanying volume. The G.C.A.G.S. Transactions has long been a valuable aid to working geologists everywhere, presenting ideas and scientific data applicable not only to our local problems, but helpful in areas the world over.

The financial position of this meeting is good. At this date we cannot predict a net gain or loss. Ample advertising and exhibit space have been sold leaving only attendance to insure a financial balance.

The cooperation extended to the convention committee by member societies was excellent. The G.C.A.G.S. can be proud of its officials, members, and publications. The horizons of progress in the field of geology through this organization are unlimited. Due to groups such as the G.C.A.G.S., our profession will continue to grow through the interest it stimulates and the image it projects.

It has been an honor and a pleasure to serve the G.C.A.G.S. as your Convention Chairman.

BYRON F. DYER

FOURTEENTH ANNUAL CONVENTION COMMITTEES

BYRON F. DYER, Texas Eastern Transmission Corp., General Chairman

PROGRAM

Douglas E. Masten, *Mobil*

EDITOR

Mary Louise Rhodes, *Standard of Texas*

PRINTING

Thomas B. Henderson, Jr., *Humble*

COVER DESIGN

H. O. Wyneken, *Humble*

AWARDS

Joseph V. McCullough, *Carrl Oil Co., Chairman*

ADVERTISING

J. E. Ramsay, *Schlumberger, General Chairman*

Robert K. Johnson, *Superior, Corpus Christi*

Neal Hilton, *Texaco, San Antonio*

Robert Meaux, *Lafayette*

Robert G. Williamson, *J. R. Frankel, New Orleans*

Fred Christian, *Sun, Houston*

John Cagle, *Continental, Shreveport*

Julius M. Ridgeway, *Ridgeway Management Inc., Jackson*

Otto Rath, *Humble, Tyler*

Ken Conrad, *Schlumberger, Beaumont*

Frank Andrews, *Tallahassee*

ARRANGEMENTS

C. E. Buck, *Humble, Chairman*

Gerald M. Heinzelman, Jr., *Humble*

Philip J. O'Brien, *Shell*

D. B. Clutterbuck, *Shell*

EXHIBITS

James W. Rutland, *Core Service, Inc.*

HOUSING

A. P. Allen, *Schlumberger*

TRANSPORTATION

J. E. Gordon, *Del Mar College*

ENTERTAINMENT

James H. Miller, *Forest Oil, Chairman*

W. D. Dobbins, *Golf Tournament, Delhi-Taylor*

John C. Barcklow, Jr., *Cocktail Party, Forest Oil*

Bruce Furlow, *Dance, Humble*

David S. Sheridan, *Barbecue, Texaco*

FIELD TRIP

Stanley L. Perkins, *Continental*

PUBLICITY

Paul M. Strunk, *Chairman, Independent*

Raymond W. Govett, *Superior*

Donald L. Kling, *Sinclair*

William E. Jackson, *Skelly*

George M. Harwell, Jr., *Shell*

LADIES ACTIVITIES AND REGISTRATION

Mrs. David S. Sheridan, *Chairman*

Mrs. James H. Miller, *Co-Chairman*

REPORT OF THE PROGRAM CHAIRMAN

In keeping with the theme of this year's convention, "Trends Old and New", a three-fold technical program has been attempted. The "Old" portion of the program consists of retrospective papers examining what we have learned from past exploration and projecting the findings to the future. The "New" portion consists of two parts: future exploration and productive trends, and trends in new exploration tools and techniques. It is hoped that everyone will find something of value in the program or future reference in the Transactions.

A number of people contributed to the assembly of this program. Without their help the job would have been much more difficult if not impossible. Among those assisting were:

Walter F. Coleman, The California Company, New Orleans

Henry H. Krusekopf, Jr., Consultant, Tyler

H. J. McCunn, Mobil Oil Company, Jackson

George C. Shute, Colston Corp., Shreveport

E. G. Wermund, Socony Mobil Oil Company, Inc., Dallas

To these people and many more is due the credit for the program. In addition, Miss Elizabeth Marek with Mobil Oil Company in Corpus Christi well deserves the credit for many hours spent in typing and mailing the program correspondence.

To everyone, my most sincere thanks.

DOUGLAS E. MASTEN

REPORT OF THE EDITOR

The Transactions has become a recognized handbook concerning the geology of the coastal areas. Therefore, let us all be especially careful in the preparation of material to be published in future volumes to maintain and enhance this standing.

The editor expresses her appreciation to all the authors who prepared well written and illustrated articles that needed little, if any, editing. Your co-operation in preparation of illustrations that could be reproduced on regular pages is especially acknowledged. It is almost certain that errors have been made and I hope that I will be excused for them.

The editor of the Gulf Coast Section of the SEPM, Gene Kellough of Houston assisted in editing many of the papers that deal with paleontology and I wish to thank her for her assistance.

Particular acknowledgement is made to the Standard Oil Company of Texas and my supervisors who permitted me to take this assignment and who permitted others in the organization to assist. Special thanks are extended to Judy Anderson who typed many pages of manuscripts before they were sent to the printer, to other clerks who proof read numerous papers, and to drafting personnel who adapted some of the figures and made minor corrections on others.

Finally, the GCAGS is especially appreciative of the publication and printing of the colored foldout map by the Shell Oil Company so that it could be included with the paper by Lozo and Smith. Future contributions of colored maps of illustrations for inclusion in the volume will I am sure be welcomed by new editors when there is no cost to the society.

MARY LOUISE RHODES

**OFFICERS OF GULF COAST SECTION
SOCIETY OF ECONOMIC PALEONTOLOGISTS AND MINERALOGISTS**

PRESIDENT	Lyman D. Toulmin, Department of Geology, Florida State University, Tallahassee, Florida
PAST PRESIDENT	Albert D. Warren, Mobil Oil Company, P. O. Box 908 Bellaire 101, Texas
VICE PRESIDENT	E. Ann Butler, Sinclair Research, Inc., P. O. Box 7190, Tulsa, Oklahoma
SECRETARY	C. Clarence Albers, Pan American Petroleum Corporation, P. O. Box 50879, New Orleans 50, Louisiana
TREASURER	John E. Kilgore, Standard Oil Company of Texas, P. O. Box 66247, Fairview Station, Houston 6, Texas
EDITOR	Gene Ross Kellough, Department of Geology, University of Houston, Houston 4, Texas

**BUSINESS REPRESENTATIVES
GULF COAST SECTION OF S.E.P.M.**

Emmett R. Adams	Jackson, Mississippi	William R. Paine	Lafayette, Louisiana
Harold K. Brooks	Gainesville, Florida	S. F. Percival	Dallas, Texas
Alan H. Cheetham	Baton Rouge, Louisiana	B. J. Petrusek	New Orleans, Louisiana
H. E. Eveland	Beaumont, Texas	Frank Shaw	Houston, Texas
W. J. Huff	Hattiesburg, Mississippi	Fred E. Smith	College Station, Texas
Douglas E. Jones	University, Alabama	N. J. Tartamella	Corpus Christi, Texas
Sybil Lightfoot	San Antonio, Texas	S. R. Windham	Tallahassee, Florida
Paul H. Nichols	Tyler, Texas	Keith P. Young	Austin, Texas

REPORT OF THE PRESIDENT, GULF COAST SECTION, S.E.P.M.

1964

The Gulf Coast Section of the Society of Economic Paleontologists and Mineralogists is beginning its second decade of activity and service to geologists concerned with Gulf Coast paleontology, mineralogy and stratigraphy. During this time the Section has endeavored to provide information of value to geologists by sponsoring presentation of technical papers at meetings, and making these studies available to other geologists in the Transactions, sponsoring field trips and publishing guide books, and sponsoring a monographic work on Gulf Coast type localities that will include descriptions, diagrams of geologic sections, and maps. The project is well underway with the completion during the year of Unit III containing descriptions of fifteen type and reference localities. This makes a total of fifty-four localities described in the three units published to date.

During the decade the Section shared a close and mutually beneficial relationship with the G.C.A.G.S. in holding its technical sessions in conjunction with the G.C.A.G.S. annual convention and publishing papers presented at the Annual Meeting in the Transactions.

The membership of the Section on May 15 consisted of 120 members, 125 Associate Members, and 6 Honorary Members, a total of 251. This is 13 more than last year's membership. The first Honorary Members of the Gulf Coast Section S.E.P.M. were elected by the 1963 Executive Council. They are Mrs. Esther R. Applin, Miss Alva C. Ellisor, Dr. Henry V. Howe, Miss Hedwig T. Kniker, Miss Winnie McGlamery, and Dr. John R. Sandidge. The Section is proud to recognize them for their contributions to Gulf Coast paleontology and stratigraphy.

In the past the members of the Section have participated actively in programs, publications, and administration of national societies and local societies. Many members of the Section will again have an opportunity to be of service in arranging a successful A.A.P.G.-S.E.P.M. annual convention in New Orleans in 1965.

My sincere appreciation and thanks are extended to the Council, the Editor, Program Chairman, Business Representatives, and other members who have contributed their time, energy, and interest in assuring a successful year for our Section.

LYMAN D. TOULMIN

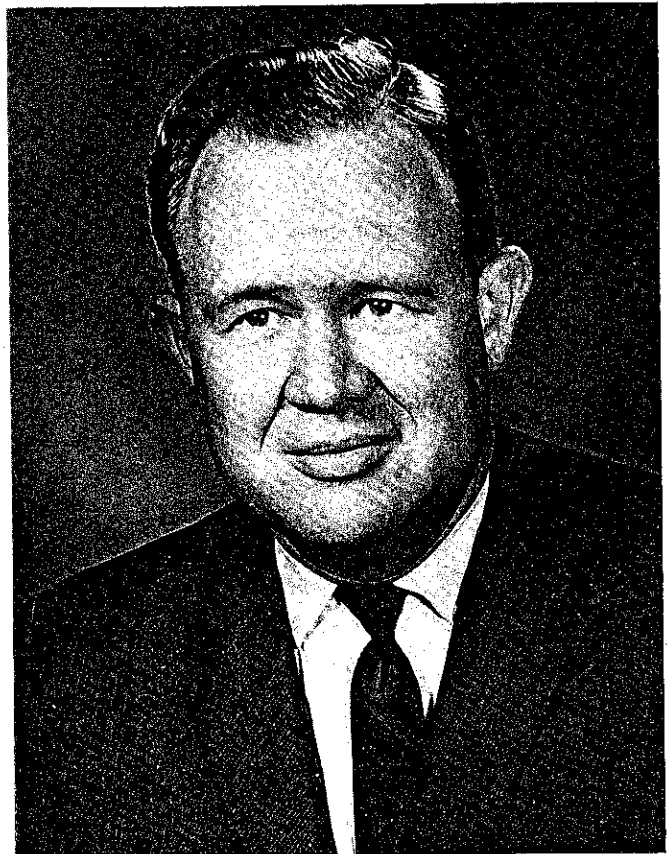
BEST PAPER AWARDS, 13TH ANNUAL MEETING

Awards for the best papers presented at the G.C.A.G.S. Thirteenth Annual meeting in Shreveport were as follows: First — "Environmental Control of Oil and Gas Occurrence in Terrigenous Clastic Rocks" by E. H. Rainwater; Second — "Smackover Prospects in East Texas" by Vernon Peppard; and Third — "The Birth and Death of an Offshore Bar" by Sankey L. Blanton, Jr.

Papers presented by the Study Groups from the Lafayette and New Orleans Geological Societies deserve special mention, since there are no awards for such projects.



E. H. RAINWATER is a graduate of Mississippi State College and received an M.S. degree in Geology from Northwestern University and did further study at Indiana University. He is now consultant for Tenneco Oil Company, Houston, Texas.



VERNON PEPPARD is a graduate of the University of Arkansas and is now consulting geologist and President of Geomap Company of Dallas, Inc., Dallas, Texas.

PUBLICATIONS
of the
GULF COAST ASSOCIATION OF GEOLOGICAL SOCIETIES

Following is a list of available publications of the G.C.A.G.S. They may be ordered from Cambe Log Library, 718 Milam Street, Houston 2, Texas. Prices are postpaid but 2% sales tax must be added to all orders. Make your check payable to Cambe Log Library, Inc.

TRANSACTIONS

1951 Volume 1 — New Orleans	\$3.70
1952 Volume 2 — Corpus Christi	(Now out of print)
1953 Volume 3 — Shreveport	5.70
1954 Volume 4 — Houston	3.70
1955 Volume 5 — Biloxi	3.70
1956 Volume 6 — San Antonio	3.70
1957 Volume 7 — New Orleans	5.70
1958 Volume 8 — Corpus Christi	5.70
1959 Volume 9 — Houston	5.70
1960 Volume 10 — Biloxi	5.70
1961 Volume 11 — San Antonio	5.70
1962 Volume 12 — New Orleans	6.70
1963 Volume 13 — Shreveport	5.70

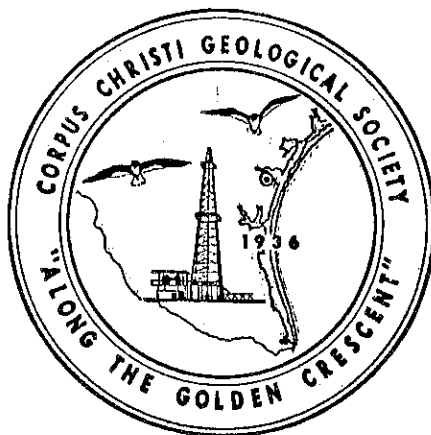
FIELD TRIP GUIDE BOOKS

1958 Sedimentology of South Texas	\$6.70
1959 Recent Sediments of the north-central Gulf Coastal Plain	4.70
1960 Upper Tertiary and Quaternary Stratigraphy of the Pascogoula Valley, Mississippi and Recent Coastal Sedimentation of the Mississippi Sound	2.20
1961 Southern Edwards Plateau	4.70
1962 Little Stave Creek, Salt Mountain Limestone, Jackson, Alabama	3.20

CORPUS CHRISTI GEOLOGICAL SOCIETY

C. E. Buck, President
 B. F. Dyer, Jr., First Vice Pres.
 D. B. Clutterbuck, Second
 Vice-Pres.
 J. H. Miller, Secretary

J. H. Stanton, Treasurer
 E. B. Knott, Advisor
 C. B. Johnson, Advisor
 L. J. Sockwell, Advisor



PUBLICATIONS

ANNUAL FIELD TRIP GUIDEBOOKS. Includes road logs and articles on the geology of the area and the specific stops.

- 1950 Corpus Christi to Laredo to Rio Grande City. 7 pp.....\$1.00
- 1961 "Geology of the Pleistocene to Jurassic of Northeastern Mexico."
 Nuevo Laredo to Monterrey to Reynosa, Mexico. 60 pp. 10 pl.....\$4.50
- 1962 "Sedimentology of South Texas." Corpus Christi to Brownsville.
 83 pp. 43 pl.....\$3.50
- 1963 "Geology of Perengrina Canyon and Sierra de El Abra." Corpus
 Christi to Cds. Valles and Victoria, Mexico. 107 pp. 29 pl.....\$7.00

-
- "Cretaceous, Wilcox and Frio Symposia", 1962. 90 pp., 45 illus.....\$4.25
 - "Photo-Directory of C.C.G.S. Members", 1962-63.....\$3.50

SUBSURFACE CROSS SECTIONS:	<u>Small</u>	<u>Large</u>
Zapata to Cameron Counties, Texas, 1954	\$2.50	\$3.50
Webb to Kleberg Counties, Texas, 1954	\$2.50	\$3.50
Cameron to Kenedy Counties, Texas, 1955	\$2.50	\$3.50
Kenedy to Calhoun Counties, Texas, 1955	\$2.50	\$3.50

Please add \$.15 per item for postage and handling and 2% Texas sales tax if purchased within the state. Mail orders to:

Publications Department
 Corpus Christi Geological Society
 P. O. Box 1068
 Corpus Christi, Texas 78403



Lafayette Geological Society

Founded December 1952

1964

President	Allen M. Borland
Vice-President	William R. Paine
Secretary	Leonard C. Searles
Treasurer	Robert A. Anderson
Directors	John Van Fossen S. A. Womack Marvin Munchrath

PUBLICATIONS

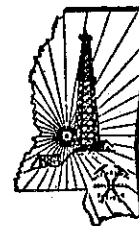
1954 ... Stratigraphy of the Miocene, South Louisiana Idealized isometric block diagram	\$2.50
1955 ... South Louisiana type logs Western Portion (logs 1-30)	\$35.00
1956 ... South Louisiana type logs Central Portion (logs 31-60)	\$35.00
1957 ... South Louisiana type logs Central Eastern Portion (logs 86-114)	\$40.00
1958 ... South Louisiana type logs Eastern Portion (logs 86-114)	\$45.00
1962 ... Stratigraphic Card Index of Foraminifera Papers in the Journal of Paleontology through 1962	\$4.00
1962 ... Camerina and Cibicides Hazzardi Stratigraphic Intervals of Southwest Louisiana (Maps and Cross-Sections)	\$35.00
1964 ... Lafayette Photo Directory (Geologists, Geophysicists, Landmen, and Scouts)	\$4.00
1964 ... Typical Fields of Southwestern Louisiana (Being completed)	\$8.00 est.

Order through:

Secretary
Lafayette Geological Society
Box 1896, O.C.S.
Lafayette, La. 70505

MISSISSIPPI GEOLOGICAL SOCIETY

PUBLICATIONS LIST



1. Sixth Field Trip Guidebook—Upper Eocene, Oligocene & Lower Miocene of Central Mississippi—June, 1948. \$ 5.00
2. Seventh Field Trip Guidebook—PreCambrian & Paleozoic Rocks of North Alabama & South Central Tennessee—August, 1949. \$ 4.00
3. Ninth Field Trip Guidebook—Claiborne of Western Alabama & Eastern Mississippi — September, 1952. \$ 4.50
4. Eleventh Field Trip Guidebook—Paleozoic Rocks, Central Tennessee & Northwest Alabama—May, 1954. \$ 4.00
5. Fourteenth Field Trip Guidebook—Upper Cretaceous of Northeast Mississippi and West Central Alabama—May, 1959. \$ 2.50
6. Fifteenth Field Trip Guidebook—Cenozoic of Southeastern Mississippi and Southwestern Alabama—May, 1960. \$ 3.00
7. Wilcox Oil Fields, Southern Mississippi & Adjacent Areas — 61 Illustrations — July, 1952. \$ 5.00
8. General Geology of Mississippi By Tom McClothlin — March, 1955. \$.50
9. Wilcox Composite Electric Log. Scale 2"-100' \$.50
10. Mesozoic Composite Log of South Mississippi & South Alabama \$ 1.00
11. Paleozoic Composite Log of Black Warrior Basin, Mississippi & Alabama. \$ 1.00
12. Geological Map of Mississippi. Scale 1-500,000 \$ 3.25
13. Cretaceous Correlation Chart of Mississippi. \$.90
14. Tertiary Correlation Chart of Mississippi. \$.90
15. Paleozoic Cross Section from South Central Tennessee to Central Mississippi. Scale 1"-300' (Vert.) \$ 3.00
16. Mesozoic Cross Section from Concordia Parish, Louisiana to Walton County, Florida, Scale 1"-200' (Vert.) \$ 2.25
17. Black Warrior Basin PreChester Correlation Section, East-West Section from Walker County, Alabama, to Lafayette County, Arkansas; North Section from Giles County, Tennessee to Monroe County, Mississippi. Scale 1"-400' (Vert.) \$ 4.25
18. Black Warrior Basin Chester Correlation Section, Strike Section from Walker County, Alabama, to Lafayette County, Mississippi; Dip Section from Lauderdale County, Alabama, to Clay County, Mississippi. Scale 1"-400' (Vert.) \$ 3.00
19. Mesozoic—Paleozoic Producing Areas of Mississippi and Alabama, Clothbound, 154 pp, 57 maps of Oil and Gas Fields, 2 columnar section, published October, 1957. \$12.50
(Updated supplement with 55 new fields available 7-1-63 — Price \$10.00)
20. Mississippi Geological Society Photodirectory—January, 1962. \$ 1.25
21. Sixteenth Field Trip Guidebook—Magnet Cove, Ouachita Mountains, Arkansas Valley & Ozark Highlands — Miss. Geological Society in co-operation with The Arkansas Geological & Conservation Commission, May, 1962, \$ 5.50

All prices include postage. (Within continental limits of United States)

Mississippi Geological Society
 Publications Committee
 P. O. Box 422
 Jackson 5, Mississippi

HOUSTON GEOLOGICAL SOCIETY

234 ESPERSON BUILDING
HOUSTON, TEXAS 77002
FA3-9309



1964-1965

OFFICERS

HILLORD HINSON, PRESIDENT
CONSULTANT
2138 BANK OF THE SOUTHWEST BUILDING

FRANK R. HARDIN, 1ST VICE PRESIDENT
HARDIN & HARDIN
711 FIRST CITY NATIONAL BANK BUILDING

CHARLES D. McMURREY, 2ND VICE PRESIDENT
CLAUDE B. HAMILL
2306 FIRST CITY NATIONAL BANK BUILDING

MRS. MARTHA LOU SHIRLEY, SECRETARY
SHELL CANADIAN EXPLORATION COMPANY
904 FANNIN BANK BUILDING

JESSE L. GEORGE, JR., TREASURER
P. R. RUTHERFORD
1041 ESPERSON BUILDING

EXECUTIVE COMMITTEEMEN

WENDELL L. LEWIS
CONSULTANT
904 BANK OF THE SOUTHWEST BUILDING

DEWITT D. VAN SICLEN
DEPARTMENT OF GEOLOGY
UNIVERSITY OF HOUSTON

HENRY F. FOWLER
GULF OIL CORPORATION
P. O. DRAWER 2100

BENTRY KIDD
CONSULTANT
818 ESPERSON BUILDING

EX-OFFICIO

ORVILLE B. LUNDSTROM
R. H. GOODRICH ESTATE
608 BANK OF THE SOUTHWEST BUILDING

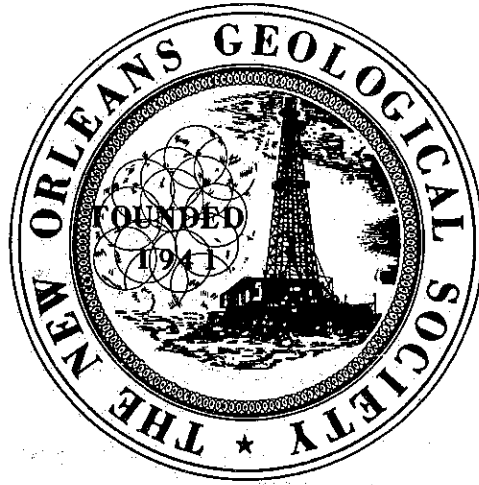
NEW ORLEANS GEOLOGICAL SOCIETY

OFFICERS 1964-1965

President: H. O. Woodbury
1st Vice-President: William H. Hintze
2nd Vice-President: Richard R. McLeod
Secretary: B. E. VanArsdale, Jr.
Treasurer: J. A. Gilreath

Directors 1964-1965

Donald I. Andrews
D. N. Rockwood
D. D. Utterback
Donald D. Wingfield



PUBLICATIONS

- GEOLOGIC MAP OF LOUISIANA (In Preparation)** \$ 5.00
A new revision, printed in colors, 1:500,000 Scale.
- ELECTRIC LOGS OF SOUTH LOUISIANA (Sept. 1962)** \$ 6.00
A manual designed for geologists who are not specialists but who require a sound background in the response of electric logs to the many different chemical and physical conditions encountered within the zone of investigation of the electric log—Illustrated by approximately 75 electric logs, supplemented by micrologs, radioactivity logs, etc.
- SALT DOMES OF SOUTH LOUISIANA** \$12.00
Revised Vol. 1 (Oct., 1963) Including Binder
- Vol. II (March, 1962)** \$ 8.00
Maps and data on 19 of the salt domes of South Louisiana (including Off-shore), bound in an attractive vinylplastic loose-leaf binder.
- GUIDEBOOK—Fieldtrip—Peninsula of Yucatan, Mexico (Feb., 1962)** \$ 6.50
- GUIDEBOOK—Fieldtrip—Jefferson Island Salt Dome (1961)** \$ 1.00
- REGIONAL CROSS SECTIONS, (Published 1954-1956). Total set of 8** \$25.00
- DIRECTORY (1964-65)** \$ 2.00
Members Names, Addresses and Business Affiliations

Orders may be mailed to:

NEW ORLEANS GEOLOGICAL SOCIETY

C/O BLAKEY'S LOG SERVICE

822 1/2 Gravier Street

New Orleans 12, Louisiana

SHREVEPORT GEOLOGICAL SOCIETY

P. O. Box 750
Shreveport, Louisiana 71102

PUBLICATIONS

FIELD TRIP GUIDE BOOKS

Interior Salt Domes and Tertiary Stratigraphy of North Louisiana, 20th Trip, 147 pp. (1960)	\$5.00
Cretaceous of Southwest Arkansas and Southeast Oklahoma, 21st Trip, with Selected Field Papers in South Arkansas and North Louisiana, 89 pp. (1961)	3.50

REFERENCE REPORTS ON OIL AND GAS FIELDS AND REGIONAL GEOLOGY OF NORTH LOUISIANA, SOUTH ARKANSAS, MISSISSIPPI AND ALABAMA

Volume II, 205 pp. (1947)	7.00
Volume III, No. 1, 42 pp. (1951)	2.00
Volume III, No. 2, 108 pp. (1953)	5.00
Volume IV, 204 pp. (1958)	5.00
Volume V, 202 pp. (1963) (New Publication)	7.00

OTHER PUBLICATIONS

Geological Map of Louisiana (blue line print), Scale: 1"—8 miles (1946)	5.00
Structural and stratigraphic cross sections of north Louisiana and south Arkansas (set of 8) with index map and geologic map of pre-Upper Cretaceous surface	3.50
Compilation of Producing Formations by Fields covering NE Tex., N. La., S. Ark, Miss. and Ala. (1951)	1.00
Upper Gulf Coast Correlation Chart	1.00
Penetration Charts and Reservoir Data Summary of Oil and Gas Fields in South Arkansas and North Louisiana, 11 sheets (1953)	4.00
Set of nine (9) maps and one cross-section depicting the "Regional Stratigraphic Analysis of the Cotton Valley Group of the Upper Gulf Coastal Plain" (1954)	6.00
Oil and Gas Producing Zones in the Wilcox (Eocene) of Central Louisiana, 23 pp. (1961)	3.00
Photo Directory of Shreveport Geological Society 1960-61	3.00
Photo Directory of Shreveport Geological Society 1961-62	3.00

Make Checks Payable To:

SHREVEPORT GEOLOGICAL SOCIETY
P. O. Box 750
Shreveport, Louisiana 71102



ST

**another advancement
in formation evaluation
- only from Johnston**

MFE

(MULTI-FLOW EVALUATOR)

The MFE gives you more complete, more accurate evaluation of sub-surface reservoirs than ever before possible. This unique system from Johnston's engineering-research laboratories provides an *uncontaminated* fluid sample plus an *unlimited number* of pressure build-up and flow periods.

Simple up-and-down motion to open and close valves makes the MFE system ideal for deviated holes.

Write today for a detailed technical brochure on the MFE and learn why it makes possible the most complete reservoir analysis you can obtain.

A WORLD OF EXPERIENCE



JOHNSTON TESTERS

Formation Evaluation • Completion Services and Products
HOUSTON, TEXAS • CALGARY, ALBERTA